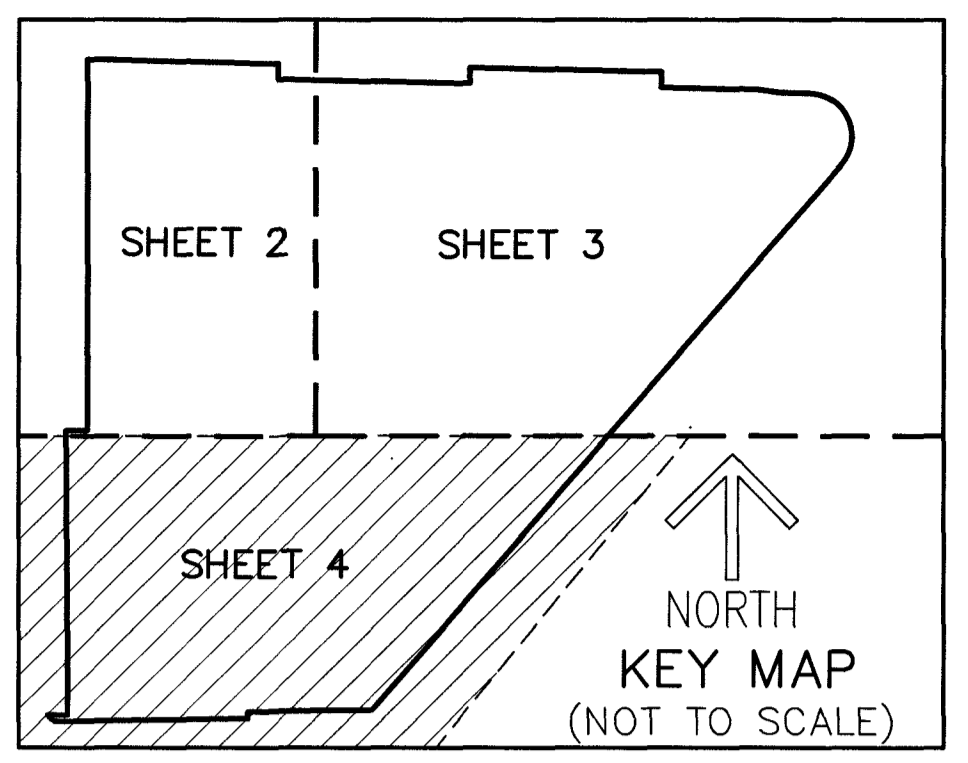
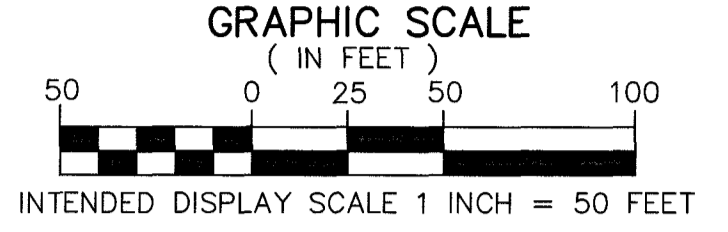
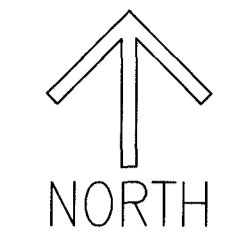


# ARRIGO MUPD REPLAT

BEING A REPLAT OF ARRIGO M.U.P.D., ACCORDING TO THE PLAT THEREOF, AS RECORDED IN PLAT BOOK 126, PAGES 167 THROUGH 169 AND THE NORTH 15 FEET OF THE 30 FOOT STRIP LYING SOUTH OF AND ADJACENT TO THE EAST 1/2 OF THE WEST 1/2 OF TRACT 1, BLOCK 4, THE PALM BEACH FARMS CO. PLAT NO. 3, ACCORDING TO THE PLAT THEREOF, AS RECORDED IN PLAT BOOK 2, PAGES 45 THROUGH 54 ALL OF THE PUBLIC RECORDS OF PALM BEACH COUNTY, FLORIDA AND LYING IN SECTION 27, TOWNSHIP 43 SOUTH, RANGE 42 EAST, PALM BEACH COUNTY, FLORIDA THIS INSTRUMENT PREPARED BY DAVID P. LINDLEY OF CAULFIELD & WHEELER, INC. SURVEYORS - ENGINEERS - PLANNERS 7900 GLADES ROAD, SUITE 100 BOCA RATON, FLORIDA 33434 - (561)392-1991 CERTIFICATE OF AUTHORIZATION NO. LB3591

**NOTES**  
**COORDINATES, BEARINGS AND DISTANCES**  
COORDINATES SHOWN ARE GRID  
DATUM = NAD 83 (90 ADJUSTMENT)  
ZONE = FLORIDA EAST  
LINEAR UNIT = US SURVEY FEET  
COORDINATE SYSTEM 1983 STATE PLANE  
TRANSVERSE MERCATOR PROJECTION  
ALL DISTANCES ARE GROUND, UNLESS OTHERWISE NOTED  
SCALE FACTOR = 1.000031401  
GROUND DISTANCE X SCALE FACTOR = GRID DISTANCE  
BEARINGS AS SHOWN HEREON ARE PLAT DATUM  
ROTATION TO GRID NAD 83 (90 ADJUSTMENT), FLORIDA  
EAST ZONE IS 00°00'02" (CLOCKWISE)

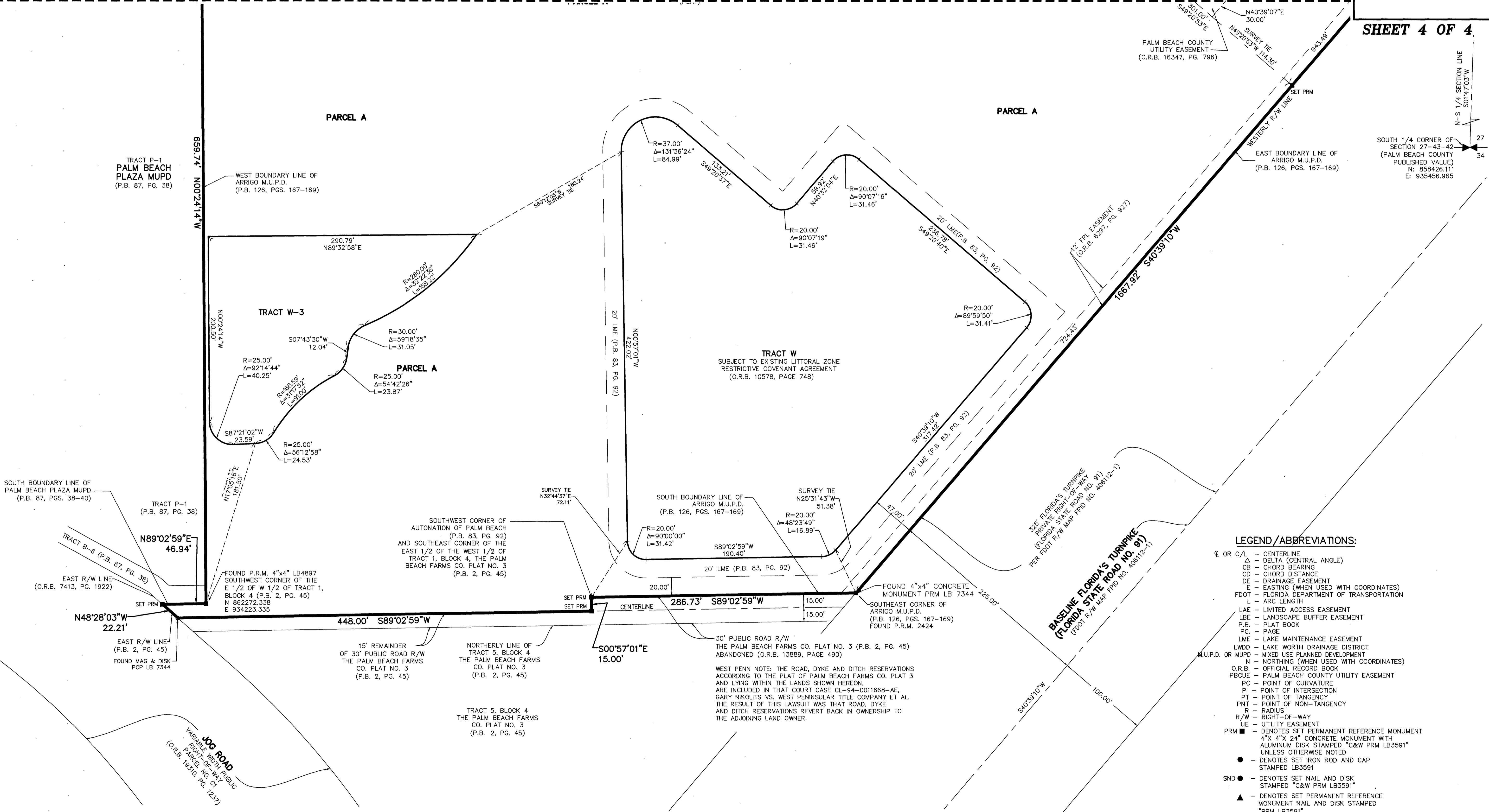


82

MATCHLINE SEE SHEET 2

MATCHLINE SEE SHEET 3

SHEET 4 OF 4



- LEGEND / ABBREVIATIONS:**
- ⊙ OR C/L - CENTERLINE
  - Δ - DELTA (CENTRAL ANGLE)
  - CB - CHORD BEARING
  - CD - CHORD DISTANCE
  - DE - DRAINAGE EASEMENT
  - E - EASTING (WHEN USED WITH COORDINATES)
  - FDOT - FLORIDA DEPARTMENT OF TRANSPORTATION
  - L - ARC LENGTH
  - LAE - LIMITED ACCESS EASEMENT
  - LBE - LANDSCAPE BUFFER EASEMENT
  - P.B. - PLAT BOOK
  - PG. - PAGE
  - LME - LAKE MAINTENANCE EASEMENT
  - LWDD - LAKE WORTH DRAINAGE DISTRICT
  - MUPD OR MUPD - MIXED USE PLANNED DEVELOPMENT
  - N - NORTHING (WHEN USED WITH COORDINATES)
  - O.R.B. - OFFICIAL RECORD BOOK
  - PBCUE - PALM BEACH COUNTY UTILITY EASEMENT
  - PC - POINT OF CURVATURE
  - PI - POINT OF INTERSECTION
  - PT - POINT OF TANGENCY
  - PNT - POINT OF NON-TANGENCY
  - R - RADIUS
  - R/W - RIGHT-OF-WAY
  - UE - UTILITY EASEMENT
  - PRM ■ - DENOTES SET PERMANENT REFERENCE MONUMENT
  - 4"X 4"X 24" CONCRETE MONUMENT WITH ALUMINUM DISK STAMPED "C&W PRM LB3591" UNLESS OTHERWISE NOTED
  - - DENOTES SET IRON ROD AND CAP STAMPED LB3591
  - - DENOTES SET NAIL AND DISK STAMPED "C&W PRM LB3591"
  - ▲ - DENOTES SET PERMANENT REFERENCE MONUMENT NAIL AND DISK STAMPED "PRM LB3591"
- (PLAT) - ARRIGO M.U.P.D., ACCORDING TO THE PLAT THEREOF AS RECORDED IN PLAT BOOK 126, PAGES 167, 168, AND 169 OF THE PUBLIC RECORDS OF PALM BEACH COUNTY, FLORIDA.

SOUTH 1/4 CORNER OF SECTION 27-43-42 (PALM BEACH COUNTY PUBLISHED VALUE) N: 858426.111 E: 935456.965